

KCF Technologies Inc.

# Smart Tether Software Plug-Ins

Expand the capabilities of your Smart Tether system with these optional software plug-ins that offer additional functionality for improved mapping, mission management, and integration with other technologies.

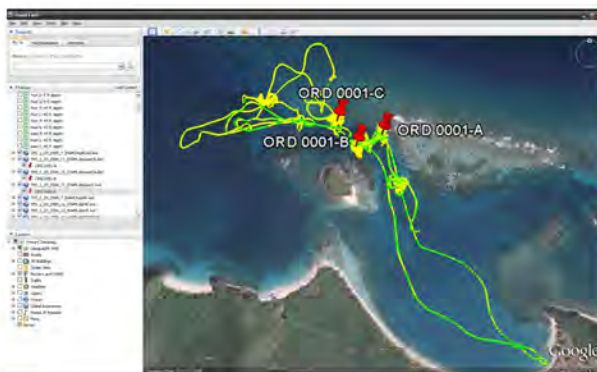
## Chart Overlay Plug-In



### Features

- Overlay a nautical chart or other image in the background of the Smart Tether navigation window.
- Instantly geo-reference ROV, diver and tether position.
- Utilize your existing chart library or freely-available charts; no need to purchase a new charting system.

## Path and Waypoint Plug-In



### Features

- Export saved Smart Tether data to Google Earth KML objects.
- Create mission summaries and other operation documentation.
- Email or distribute data to non-Smart Tether users.

#### Availability:

Smart Tether and accessories are available through KCF Technologies Inc., VideoRay LLC, and most VideoRay dealers.

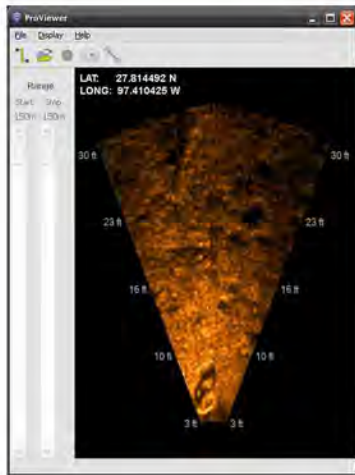


Fax: 814-690-1579  
 Telephone: 814-867-4097  
 Email: sales@kcftech.com

KCF Technologies Inc.

# Smart Tether Software Plug-Ins

## Real-Time Data Output Plug-In



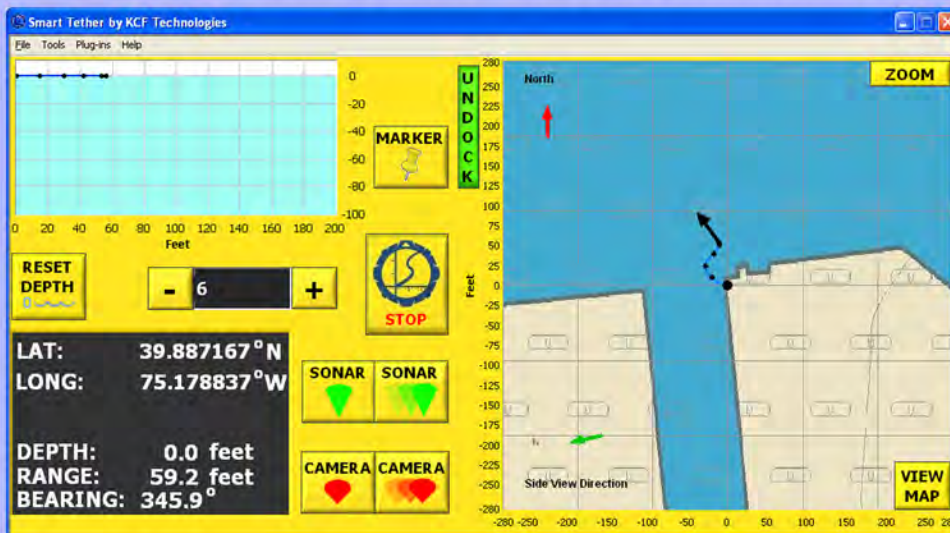
### Features

- Output Smart Tether position data in real time to external hardware or software.
- Create real-time overlays for other software or incorporate Smart Tether position data into mapping or mission management software.

www.smarttether.com

## Smart Tether 2010 Software

All of the software plug-ins are available as optional accessories to the new and improved 2010 Smart Tether Software. The software includes an improved user interface which offers users new operational features and enhances compatibility with VideoRay's Pro 4 Cockpit software.



### Availability:

Smart Tether and accessories are available through KCF Technologies Inc., VideoRay LLC, and most VideoRay dealers.



Fax: 814-690-1579  
Telephone: 814-867-4097  
Email: sales@kcftech.com